



The better method to install solderless compression connectors on power cable

The Thomas & Betts method of installing compression connectors on power cables is designed to provide a high degree of reliability in electrical wiring.

This method allows electrical workers to make installations with little effort and considerable savings in time. The Thomas & Betts method is a simple three-step installing procedure that utilises Color-Keyed® connectors and dies with compression type installing tools.

Just three steps

- First, the appropriate connector is chosen for the conductor size
- Next, the proper installing die is selected by matching the die colour to the connector colour
- Last, the die is installed in the tool, and the connector is compressed

Color-Keyed®

Overview

Precision dies form a solid, homogenous mass

The Thomas & Betts method utilising compression tools with matching dies forms the connector and conductor into a solid, homogenous mass to provide an optimum electrical bond between connector and conductor.

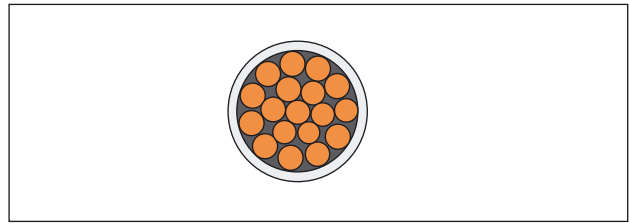
Color-Keyed® dies are designed to produce a circumferential, hex- or diamond-shaped compression rather than a simple indent. Precision dies are an integral part of the Thomas & Betts method.

Each die is designed so that all conductors receive the same amount of compression force. The circumferential compression creates a large area of high pressure contact between cable and connector which, in turn, assures high conductivity, low resistance, and high pullout values which exceed UL requirements.

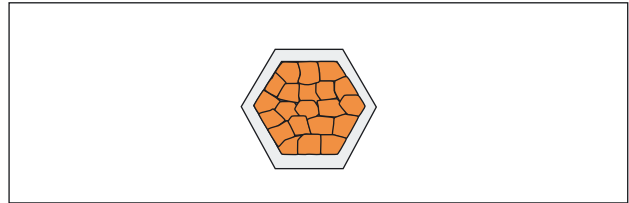
These features result in a permanent, low installed cost connection. You can install it, and forget it.

The Color-Keyed® system from Thomas & Betts tells you where to place the installing die

Color-Keyed® connectors not only identify the correct installing die to be used for positive compressions, but also indicate the proper placement of the die on the connector. This is done by the coloured rings around the connector which match the colour on the dies. Compression is made between or on these colour bands. The colour name is also spelled on the connector as an added means of identification.



Before compression, a typical cross section of cable and connector consists of about 75% metal and 25% air.



Air compression by the T&B Method, the cross section looks like this, 100% metal with virtually no air spaces.



The die is positioned between colour bands for copper connectors and on the bands for aluminium connectors.

FEATURES	BENEFITS
High conductivity electrolytic copper	Excellent electrical conductivity thanks to lowest electrical resistance, associated to superior tensile strength
Tubular construction	No seam, ensuring excellent mechanical properties
Electro-tin plated	Enhanced corrosion resistance
Colour-coding according to the cross-section of the cable, by marking the connector with coloured rings and with the name of the colour	Easy selection of the connector, the die and the tool according to the size of the cable Higher level of reliability
Die-code engraved on the surface of the die	Easy and reliable inspection
Specifications	According to DIN and UL

Two-way splices

- For copper cable
- 600V to 35kV
- 2 types: - standard barrel
- long barrel

**Lugs**

- For copper cable
- 600V to 35kV
- Standard barrel
- 2 types: - one installing hole
- two installing holes



See pages 326 to 329 for detailed information on standard product offering

Special & customised product offering**Color-Keyed[®]: special lugs for special applications****Angled, shaped and trimmed**

Thomas & Betts can solve your difficult wire bending and terminating problems in confined power distribution panels, switchgear and motor control enclosures. We have the design and production capability to deliver exactly the type of lug you need, shaped the way you need.

- Straight, 45° and 90° angle
- Stacking or non-stacking
- Narrow tongue or standard
- Tin, silver, lead, nickel plated Thomas & Betts offer an extensive line of copper Color-Keyed[®] lugs for flexible and solid cables.

The lug tongues are modified in several different configurations to meet your exact needs: 45° and 90° bend angles, narrow tongues to fit into circuit breakers, offset tongues to stack two cables, and special stud hole drilling.

These special configurations let you:

1. run the cable directly to the bus bar with no bending,
2. terminate into very narrow spaces, and
3. utilise minimal bus bar space.

The specially designed lugs help you “clean up” your cabling in crowded enclosures.

Customised Color-Keyed[®] lugs**Connectors for Copper Cables**

All customised lugs can be made to order. Minimum order quantity: standard package quantity by cable size. Consult your Sales Office for price and delivery.

Unit conversion table: AWG round wire size to diameter and cross-section

WIRE SIZE AWG	NOMINAL DIAMETER [inch]	NOMINAL DIAMETER [mm]	CROSS- SECTION [mm ²]	CMA CIRCULAR MILS [cmil]
4/0	0.4600	11.684	107.219	211600
3/0	0.4096	10.404	85.011	167800
2/0	0.3648	8.547	67.432	133100
1/0	0.3249	8.252	53.488	105600
1	0.2893	7.348	42.409	83690
2	0.2576	6.543	33.624	66360
3	0.2294	5.827	26.655	52620
4	0.2043	5.189	21.149	41740
5	0.1819	4.620	16.766	33090
6	0.1620	4.115	13.289	26240
7	0.1443	3.665	10.551	20820
8	0.1285	3.264	8.387	16510
9	0.1144	2.906	6.632	13090
10	0.1019	2.588	5.262	10380
11	0.0907	2.304	4.168	8230
12	0.0808	2.052	3.308	6530
13	0.0720	1.829	2.627	5180
14	0.0641	1.628	2.082	4110

WIRE SIZE AWG	NOMINAL DIAMETER [inch]	NOMINAL DIAMETER [mm]	CROSS- SECTION [mm ²]	CMA CIRCULAR MILS [cmil]
15	0.0571	1.450	1.652	3260
16	0.0508	1.290	1.308	2580
17	0.0453	1.151	1.040	2050
18	0.0403	1.024	0.823	1620
19	0.0359	0.912	0.653	1290
20	0.0320	0.813	0.519	1020
21	0.0285	0.724	0.412	812
22	0.0253	0.643	0.324	640
23	0.0226	0.574	0.259	511
24	0.0201	0.511	0.205	404
25	0.0179	0.455	0.162	320
26	0.0159	0.404	0.128	253
27	0.0142	0.316	0.104	202
28	0.0126	0.320	0.080	159
29	0.0113	0.287	0.065	128
30	0.0100	0.254	0.051	100
31	0.0089	0.226	0.040	79
32	0.0080	0.203	0.032	64

Note: 1 kcmil = 1000 cmil

Unit conversion table: American bolt sizes

US BOLT SIZE	MIN. HOLE DIAMETER		MATCHING BOLT IN METRIC SIZE
	[mm]	[inch]	
2	2.337	0.092	M2
4	2.946	0.116	M2.5
6	3.632	0.143	M3
8	4.292	0.169	M4
10	4.978	0.196	M6
1/4	6.655	0.262	M8
5/16	8.204	0.323	M6
3/8	9.855	0.388	M8
7/16	11.506	0.453	M8
1/2	13.106	0.516	M12
5/8	16.510	0.650	M14
3/4	19.685	0.775	M18

Color-Keyed®

Two-way splice connectors for copper cable standard barrel
600 V to 35 kV applications

Two-way connectors provide high pullout values, are easy to insulate, and provide a low resistance connection of high quality and low installed cost.



Technical Information

Material	High conductivity wrought copper
Plating	Electro-tin plated
Metal barrel	Copper tube
Voltage	600V to 35kV
Marking	Colour reference for die and cable size

Approvals



00453



E9809

Ordering Information

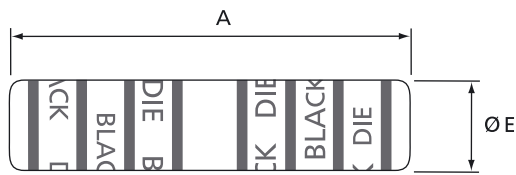
PRODUCT REF.	USA CABLE SIZE	APPROX. EUROPEAN CABLE SIZE [mm ²]	COLOUR	TOOLING DIE CODE	DIMENSIONS		WEIGHT [kg/100]	QUANTITY [pieces]
					A [mm]	E [mm]		
54504	# 8 AWG	8	Red	21	25.4	6.9	0.540	50
54505	# 6 AWG	13	Blue	24	25.4	7.6	0.553	50
54506	# 4 AWG	21	Grey	29	25.4	9.4	0.816	50
54507	# 2 AWG	25 - 34	Brown	33	31.8	10.4	1.252	25
54508	# 1 AWG	42	Green	37	38.1	11.9	1.633	20
54509	1/0 AWG	53	Pink	42H	41.4	13.2	2.132	10
54510	2/0 AWG	67	Black	45	44.5	14.5	2.903	10
54511	3/0 AWG	85	Orange	50	44.5	16.0	3.221	10
54512	4/0 AWG	107	Violet	54H	47.8	17.8	4.146	10
54513	250 kcmil	125	Yellow	62	57.2	19.6	4.990	10
54514	300 kcmil	150	White	66	54.1	21.1	6.328	10
54515	350 kcmil	175	Red	71H	57.2	22.9	7.711	10
54516	400 kcmil	200	Blue	76 / 80	69.9	23.6	10.582	6
54518	500 kcmil	250	Brown	87H	69.9	28.2	13.699	6
54520	600 kcmil	300	Green	94H	76.2	30.0	19.577	6
54522-TB	700 kcmil	350	Pink	99H	82.6	31.2	19.654	6
54523-TB	750 kcmil	375	Black	106H	76.2	33.0	22.362	6
54528	1000 kcmil	500	-	-	92.2	38.1	36.287	3

For tooling see pages 330 to 333

This represents a small part of the Color-Keyed® range, please contact your Sales Office for additional product information

Color-Keyed®

Two-way splice connectors for copper cable long barrel
600 V to 35 kV applications



Technical Information

Material	High conductivity wrought copper
Plating	Electro-tin plated
Metal barrel	Copper tube
Voltage	600V to 35kV
Marking	Colour reference for die and cable size

Approvals



00453



E9809

Ordering Information

PRODUCT REF.	USA CABLE SIZE	APPROX. EUROPEAN CABLE SIZE [mm ²]	COLOUR	TOOLING DIE CODE	DIMENSIONS		WEIGHT [kg/100]	QUANTITY [pieces]
					A [mm]	E [mm]		
54804	# 8 AWG	8	Red	21	44.5	6.4	0.789	50
54805	# 6 AWG	13	Blue	24	44.5	7.1	0.916	50
54806	# 4 AWG	21	Grey	29	44.5	9.1	1.315	50
54807	# 2 AWG	25 - 34	Brown	33	47.6	10.3	1.787	25
54808	# 1 AWG	42	Green	37	50.8	11.9	2.041	20
54809	1/0 AWG	53	Pink	42H	50.8	13.5	2.631	10
54810	2/0 AWG	67	Black	45	54.0	14.7	3.130	10
54811	3/0 AWG	85	Orange	50	57.2	15.9	4.014	10
54812	4/0 AWG	107	Violet	54H	69.9	17.9	5.874	10
54813	250 kcmil	125	Yellow	62	85.7	19.5	7.439	10
54814	300 kcmil	150	White	66	88.9	21.5	9.571	10
54815	350 kcmil	175	Red	71H	95.3	23.9	12.837	10
54816	400 kcmil	200	Blue	76 / 80	95.3	24.6	13.227	6
54818	500 kcmil	250	Brown	87H	120.7	27.8	23.678	6
54820	600 kcmil	300	Green	94H	108.0	30.2	25.809	6
54823	750 kcmil	375	Black	106H	120.7	33.7	35.380	6
54828	1000 kcmil	500	-	-	142.9	39.3	54.068	3
54833	1500 kcmil	750	-	-	165.1	47.6	95.000	3
54839	2000 kcmil	1000	-	106H	179.3	54.0	150.000	3

For tooling see pages 330 to 333

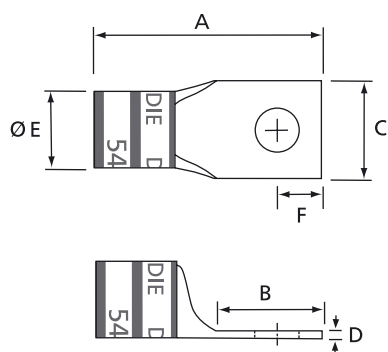
This represents a small part of the Color-Keyed® range, please contact your Sales Office for additional product information

Color-Keyed®

One hole lug for copper cable

Standard barrel

600 V to 35 kV applications



Technical Information

Material	High conductivity wrought copper
Plating	Electro-tin plated
Metal barrel	Copper tube
Voltage	600V to 35kV
Marking	Colour reference for die and cable size

Approvals



007222



E9809

Ordering Information

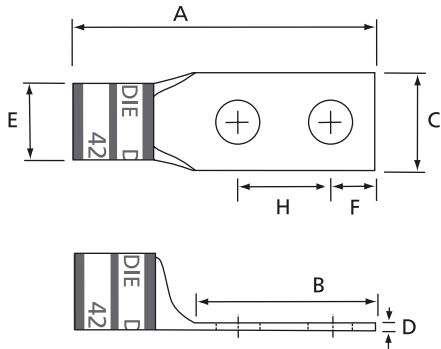
PRODUCT REF.	USA CABLE SIZE	APPROX. EUROPEAN CABLE SIZE [mm ²]	STUD SIZE		COLOUR	TOOLING DIE CODE	DIMENSIONS						WEIGHT [kg/100]	QUANTITY [pieces]
			USA	METRIC EQUIVALENT			A	B	C	D	E	F		
							[mm]	[mm]	[mm]	[mm]	[mm]	[mm]		
54132	# 8 AWG	8	3/8	M 8	Red	21	33.8	16.3	14.2	1.3	6.4	7.1	1.361	50
54136	# 6 AWG	13	3/8	M 10	Blue	24	35.8	17.0	15.2	1.8	7.9	7.9	0.603	50
54140	# 4 AWG	21	3/8	M 10	Grey	29	36.1	16.8	15.5	1.8	9.4	7.9	0.912	50
54145-TB	# 2 AWG	25 - 34	1/2	M 12	Brown	33	48.8	27.4	19.1	2.0	10.4	12.7	1.633	25
54150	# 1 AWG	42	1/2	M 12	Green	37	53.3	31.8	19.3	2.8	11.9	12.7	2.041	20
54155-TB	1/0 AWG	53	1/2	M 12	Pink	42H	55.9	31.8	19.1	3.3	13.2	12.7	3.062	10
54160	2/0 AWG	67	1/2	M 12	Black	45	57.2	31.8	21.1	3.3	14.5	12.7	3.334	10
54165-TB	3/0 AWG	85	1/2	M 12	Orange	50	59.7	31.8	23.4	3.3	16.0	12.7	4.082	10
54170	4/0 AWG	107	1/2	M 12	Violet	54H	63.5	31.8	26.2	3.6	17.8	12.7	5.171	10
54113	250 kcmil	125	1/2	M 12	Yellow	62	66.0	31.8	28.7	3.6	19.6	12.7	6.622	10
58165	4/0 Weld	-	1/2	M 12	Yellow	62	70.1	31.8	31.8	3.8	20.1	12.7	8.210	10
54114	300 kcmil	150	1/2	M 12	White	66	68.6	31.8	31.8	3.8	21.6	12.7	8.210	10
58171	300 Weld	-	1/2	M 12	Red	71H	72.4	31.8	34.5	4.6	23.6	12.7	10.705	10
54183	350 kcmil	175	5/8	M 16	Blue	76	81.5	40.1	34.5	4.6	23.6	15.9	10.909	10
54185	400 kcmil	200	5/8	M 16	Blue	80	89.7	40.1	35.8	4.3	24.4	15.9	11.340	6
58177	400 Weld	-	1/2	M 12	Black	107H	84.1	31.8	40.9	5.6	26.4	12.7	18.098	6
54187	500 kcmil	250	5/8	M 16	Brown	87H	92.2	40.1	40.9	5.6	27.9	15.9	19.958	6
58180	500 Weld	-	5/8	M 16	Green	94H	96.3	40.1	44.5	6.1	30.5	15.9	26.195	2
54120	600 kcmil	300	5/8	M 16	-	-	96.3	40.1	44.5	6.1	30.5	15.9	25.038	6
54122-TB	700 kcmil	350	5/8	M 16	Pink	99H	93.5	40.1	46.7	5.8	32.0	15.9	23.283	6
54123-TB	750 kcmil	375	5/8	M 16	Black	107H	98.3	40.1	49.3	6.9	33.8	15.9	31.661	6

For tooling see pages 330 to 333

This represents a small part of the Color-Keyed® range, please contact your Sales Office for additional product information

Color-Keyed®

Two hole lugs for copper cable
Standard barrel
600 V to 35 kV applications



Technical Information

Material	High conductivity wrought copper
Plating	Electro tin plated
Metal barrel	Copper tube
Voltage	600V to 35kV
Marking	Colour reference for die and cable size

Approvals



007222
004503



E9809

Ordering Information

PRODUCT REF.	USA CABLE SIZE	APPROX. EUROPEAN CABLE SIZE [mm ²]	STUD SIZE		COLOUR	TOOLING DIE CODE	DIMENSIONS							WEIGHT [kg/100]	QUANTITY [pieces]
			USA	METRIC EQUIVALENT			A	B	C	D	E	F	H		
256-30695-1157	# 8 AWG	6 - 8	3/8	M 10	Red	21	76.2	53.3	14.2	1.5	6.6	9.5	25.4	1.361	10
256-30695-1158	# 6 AWG	10 - 13	3/8	M 10	Blue	24	74.4	49.0	15.0	1.5	7.6	9.5	25.4	1.588	50
256-30695-1159	# 4 AWG	20 - 25	3/8	M 10	Grey	27	79.5	50.3	15.0	2.3	9.4	9.5	25.4	2.177	10
54811 BE	# 3-2 AWG	25 - 35	1/2	M 12	Brown	29	108.7	76.2	22.4	2.8	10.4	12.7	44.5	6.577	10
54857 BE	# 1 AWG	40	1/2	M 12	Green	33	112.5	76.2	22.4	2.8	11.9	12.7	44.5	7.348	10
256-30695-593	1/0 AWG	50	1/2	M 12	Pink	37	110.0	76.2	19.1	3.3	13.2	15.9	44.5	5.897	5
54862 BE	2/0 AWG	70	1/2	M 12	Black	42H	106.7	71.4	21.1	3.3	14.5	12.7	44.5	6.124	10
54864 BE	3/0 AWG	80 - 95	1/2	M 12	Orange	45	113.8	76.2	23.9	3.3	16.0	12.7	44.5	7.802	10
54866 BE	4/0 AWG	100 - 120	1/2	M 12	Violet	50	119.4	76.2	26.2	3.6	17.8	12.7	44.5	10.024	10
54868 BE	250 kcmil	125	1/2	M 12	Yellow	54H	125.0	76.2	28.7	3.6	19.6	12.7	44.5	11.567	10
54870 BE	300 kcmil	150	1/2	M 12	White	66	132.8	76.2	31.8	3.8	21.6	12.7	44.5	15.377	10
54872 BE	350 kcmil	170 - 185	1/2	M 12	Red	71H	137.2	76.2	34.5	4.6	23.6	12.7	44.5	18.915	10
54874 BE	400 kcmil	200	1/2	M 12	Blue	76/80	140.0	76.2	35.8	4.3	24.4	12.7	44.5	20.502	6
54876 BE	500 kcmil	250	1/2	M 12	Brown	87H	152.4	76.2	40.9	5.6	27.9	12.7	44.5	31.797	6
54878 BE	600 kcmil	300	1/2	M 12	Green	94H	148.1	76.2	44.5	6.1	30.5	12.7	44.5	37.798	6
54880 BE	750 kcmil	400	1/2	M 12	Black	106H	157.5	76.2	49.3	6.9	33.8	12.7	44.5	47.854	6

For tooling see pages 330 to 333

This represents a small part of the Color-Keyed® range, please contact your Sales Office for additional product information

Color-Keyed®

Standard hand tool

Product Ref.: TBM25S

- Fixed die tool, with rotating head and 5 nests
- For **Color-Keyed®** copper tube lugs and splices from: 6 to 35 mm²
- **Shure-Stake™** mechanism
- Length: 220 mm
- Weight: 430 g



Large hand tools

Product Ref.: TBM5S

- Large hand tool with interchangeable dies
- For **Color-Keyed®** copper tube lugs and splices from: 8 AWG to 250 kcmil (=8.4 to 126.7 mm²) in the case of copper cables
- Incorporates the **Shure-Stake™** mechanism: once the pressing has commenced, the tool can be re-opened only after successful completion of the crimping cycle, ensuring a correct crimp every time
- Furnished complete with carrying case and 5 installing dies (Product Ref. 13454, 13455, 13456, 13457, 13458)
- Dies are colour-coded and die-code embossed
- Tool length: 650 mm approx.
- Tool weight: 3kg approx.
- For die selection see table below



Product Ref.: TBM5

- Same specifications as Product Ref. TBM5S but does not incorporate the **Shure-Stake™** mechanism

Dies for TBM5 and TBM5S

- Multi-nest dies, to cover a wire size range from: 8 AWG to 250 kcmil (=8.4 to 126.7 mm²) in the case of copper cables
- Each nest is colour-coded and die-code embossed

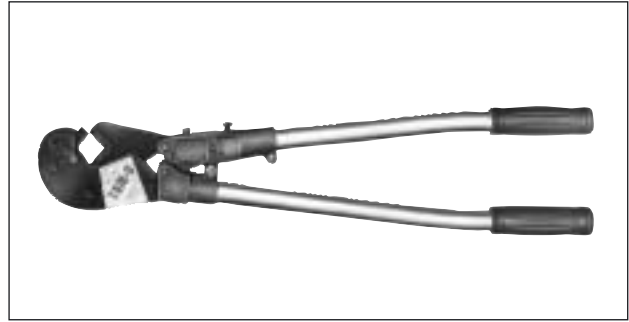
Ordering Information: dies for TBM5 and TBM5S

DIE PRODUCT REF.	NEST IDENTIFICATION COLOUR-CODE	NEST IDENTIFICATION DIE-CODE	COPPER WIRE SIZE USA	COPPER WIRE SIZE CONVERSION TO METRIC CROSS-SECTION [mm ²]
13454	red	21	8 AWG	8.4
	blue	24	6 AWG	13.3
	grey	29	4 AWG	21.1
	brown	33	2 AWG	33.6
13455	green	37	1AWG	42.4
	pink	42	1/0 AWG	53.5
	black	45	2/0 AWG	57.4
	orange	50	3/0 AWG	85.0
13456	violet	54	4/0 AWG	107.2
	yellow	60	250 kcmil	126.7

Note: 2 other dies (Product Ref. 13457 and Product Ref. 13458) are available, but for aluminium wire sizes only

Product Ref.: TBM8S

- Large hand tool with interchangeable dies
- For **Color-Keyed® copper tube lugs and splices** from: 8 AWG to 500 kcmil (=8.4 to 253.4 mm²) in the case of copper cables
- Incorporates the **Shure-Stake™ mechanism**: once the pressing has commenced, the tool can be re-opened only after successful completion of the crimping cycle, ensuring a correct crimp every time
- Furnished complete with carrying case and 8 installing dies (Product ref. 13461, 13462, 13463, 13463, 13464, 13465, 13466, 13467, 13468)
- Dies are colour-coded and die-code embossed
- Tool length: 650 mm
- Weight: 9.3 kg
- For die selection see table below



Product Ref.: TBM8

- Same specifications as Product Ref. TBM8S but does not incorporate the **Shure-Stake™ mechanism**

Dies for TBM8 and TBM8S

- Multi-nest dies, to cover a wire size range from: 8 AWG to 500 kcmil (=8.4 to 253.4 mm²) in the case of copper cables
- Each nest is colour-coded and die-code embossed

Ordering Information: dies for TBM8 and TBM8S

DIE PRODUCT REF.	NEST IDENTIFICATION COLOUR-CODE	NEST IDENTIFICATION DIE-CODE	COPPER WIRE SIZE USA	COPPER WIRE SIZE CONVERSION TO METRIC CROSS-SECTION [mm ²]
13461	red	21	8 AWG	8.4
	blue	24	6 AWG	13.3
	grey	29	4 AWG	21.1
	brown	33	2 AWG	33.6
13462	green	37	1AWG	42.4
	pink	42	1/0 AWG	53.5
	black	45	2/0 AWG	57.4
	orange	50	3/0 AWG	85.0
13463	violet	54	4/0 AWG	107.2
	yellow	60	250 kcmil	126.7
13465	white	66	300 kcmil	152.0
13466	red	71	350 kcmil	177.3
13467	blue	76	400 kcmil	202.7
13468	brown	87	500 kcmil	253.4

Note: 1 other die (Product Ref. 13464) is available, but for aluminium wire sizes only

Color-Keyed®

Hydraulic hand tool

Product Ref.: TBM14M

- Self-contained hydraulic tool with colour-coded interchangeable dies
- For **Color-Keyed®** copper tube lugs and splices from: 6 to 450 mm²
- Incorporates the **Shure-Stake™** mechanism: once the pressing has commenced, the tool can be re-opened only after successful completion of the crimping cycle, ensuring a correct crimp every time
- Swivelled "C"-shaped head rotates 180°
- Complete with carrying case
- Weight: 6.8kg
- Output pressure: 14 ton
- For die selection see table page 333



Hydraulic tool head

Product Ref.: TBM15i

- Hydraulic tool head with interchangeable dies
- For **Color-Keyed®** copper tube lugs and splices from: 6 to 500 mm²
- New longer, slimmer profile allows easier access into tight spaces
- Wider jaw opening eases crimping of larger connectors
- Available with an insulated head
- Supplied in a carrying case in steel
- Dies to be ordered separately
- Output Force: 15 tons (nominal)
- Operating Pressure: 10,000 psi (nominal)
- Tool weight: 7 kg (without dies)
- For die selection see table page 333



Smart tools

- The new SMART tools are designed to give you a uniform high quality compression connection over a wide connector range
- It easily installs copper and aluminium lugs from 6 mm² to 400 mm² without changing dies
- With its built-in intelligence, the tool will sense the barrel diameter and apply the correct amount of compression force

- Die selection mistakes are virtually eliminated
- The tool embosses a T&B mark on the connector for positive verification that the correct tool was used
- Tools are made from forged steel, suited to bench or fieldwork. Their "C"-shaped heads, light weight and compact size make them easy to use in almost any application

Product Ref.: TBM8-750

- Hydraulic remote tool head
- For **aluminium** and **copper lugs** from the Color-Keyed® line from 6 to 400 mm²
- Operates on standard 10,000 psi hydraulic pumps
- Length: 368 mm
- Weight: 4kg
- Output pressure: 12 ton
- Coupler: Pioneer, female



Product Ref.: TBM8-750M-1

- Self-contained hydraulic tool
- For **aluminium** and **copper lugs** from the Color-Keyed[®] line from 6 to 400 mm²
- Length: 538 mm
- Weight: 5.9kg
- Output pressure: 12 ton
- Operating pressure: 9800 psi



Tool die selection chart

USA	COPPER WIRE SIZE CONVERSION TO METRIC CROSS-SECTION [mm ²]	CONNECTOR COLOUR-CODE	CONNECTOR DIE-CODE	TBM8 TBM8S DIE PRODUCT REFERENCES	TBM5 TBM5S DIE PRODUCT REFERENCES	TBM14M TBM15i DIE PRODUCT REFERENCES
8 AWG	8.4	Red	21	13461	13454	15520
6 AWG	13.3	Blue	24	13461	13454	15522
4 AWG	21.1	Grey	29	13461	13454	15527CK
2 AWG	33.6	Brown	33	13461	13454	15528
1 AWG	42.4	Green	37	13462	13455	15513CK
1/0 AWG	53.5	Pink	42H	13462	13455	15508
2/0 AWG	57.4	Black	45	13462	13455	15526
3/0 AWG	85.0	Orange	50	13462	13455	15530
4/0 AWG	107.2	Violet	54H	13463	13456	15511
250 kcmil	126.7	Yellow	60	13463	13456	15510CK
300 kcmil	152.0	White	66	13465		15543
350 kcmil	177.3	Red	71H	13466		15514CK
400 kcmil	202.7	Blue	76	13467		15512
500 kcmil	253.4	Brown	87H			15506
600 kcmil	304.0	Green	94H			15611
700 kcmil	354.7	Pink	99H			15505
750 kcmil	380.0	Black	106H			15515CK
1000 kcmil	506.7	-	125H			15603
1500 kcmil	760.1	-				
2000 kcmil	1013.4	Black				

Note: This table is based on sizes of copper cable. In the case of aluminium cables, the correspondence between the cable size and the connector colour code (and therefore the appropriate die) may be different. Please contact your Sales Office for more information on the different possibilities of applications.